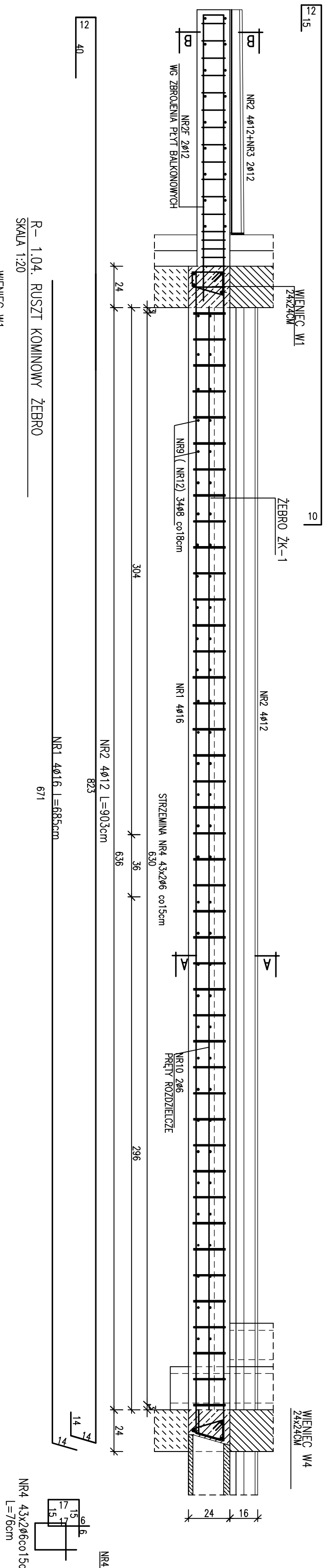
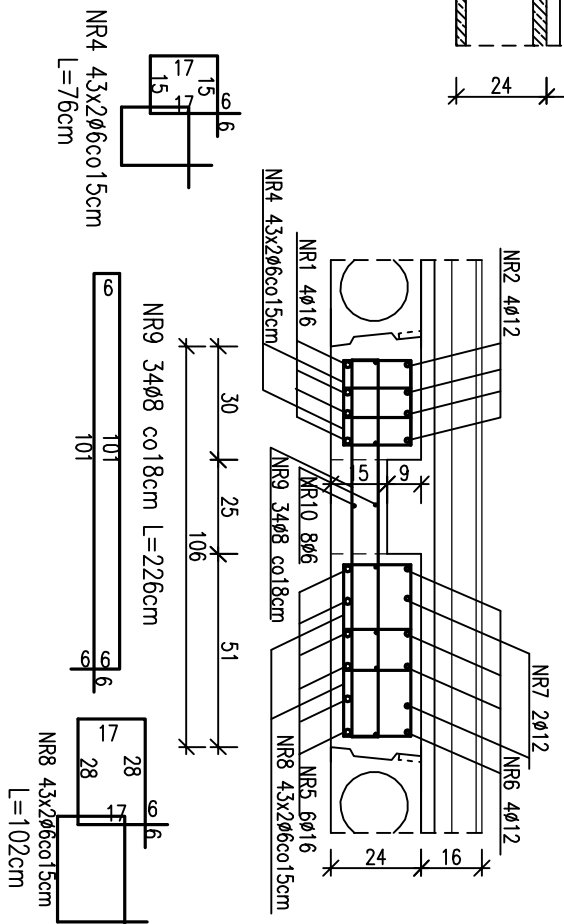


R- 1.04.+R-3.04. (R-4.04, R-5.04) RUSZT KOMINOWY ŻEBRO Żk-1
SKALA 1:20 NR3 2Ø12 L=552cm



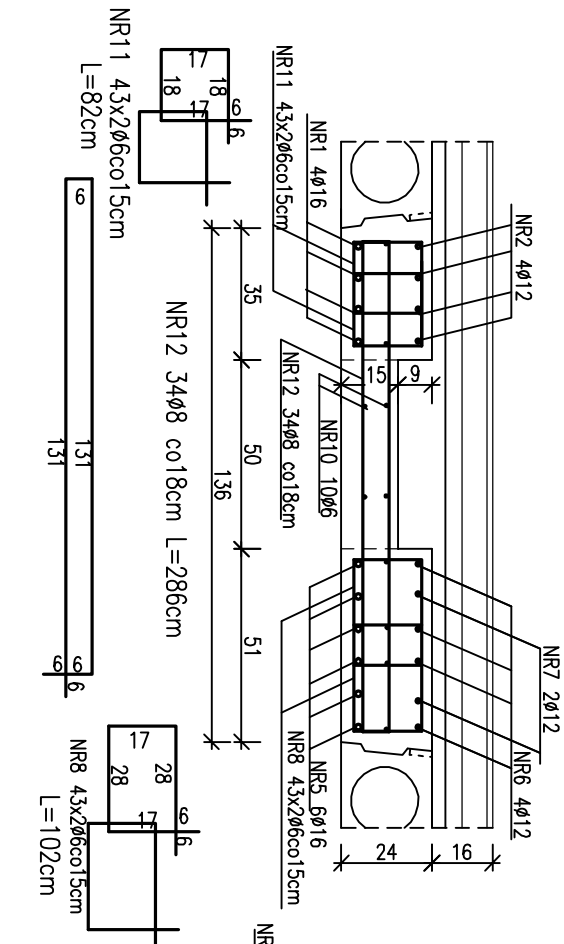
POZ. R-1.04.-3.04. PRZEKRÓJ A-A

SKALA 1:20



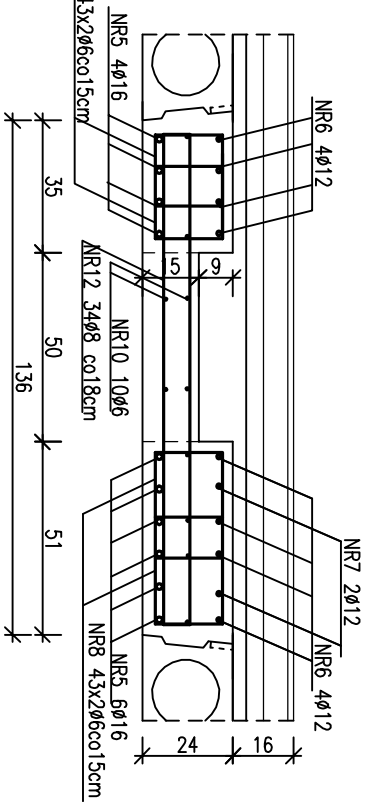
POZ. R-4.04. PRZEKRÓJ A-A

SKALA 1:20

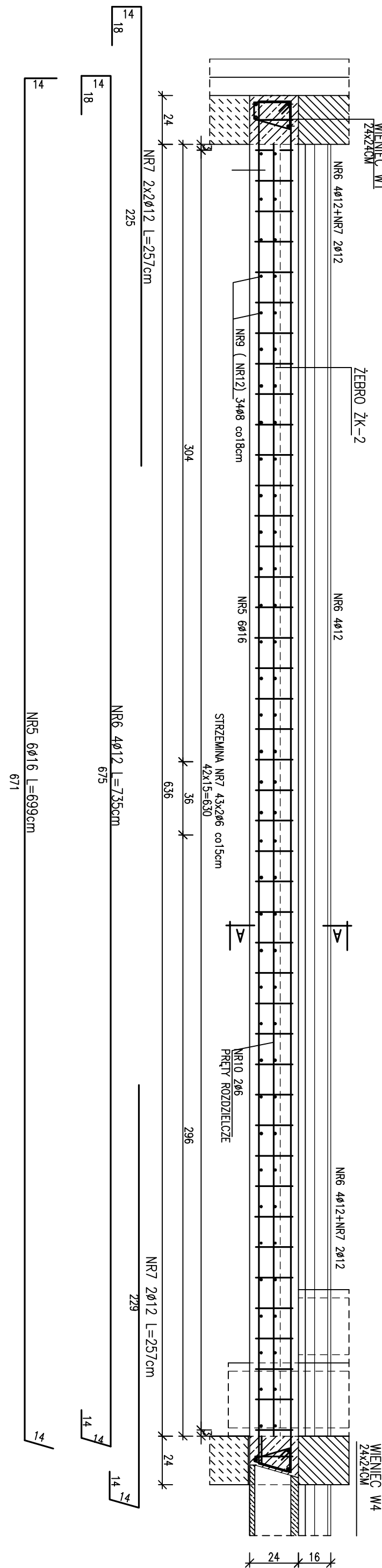


POZ. R-5.04. PRZEKRÓJ A-A

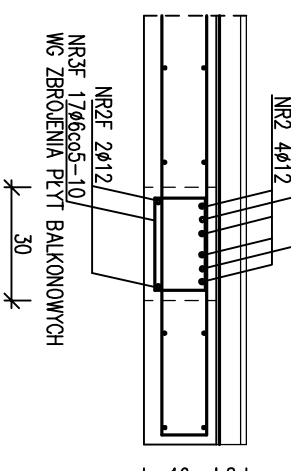
SKALA 1:20



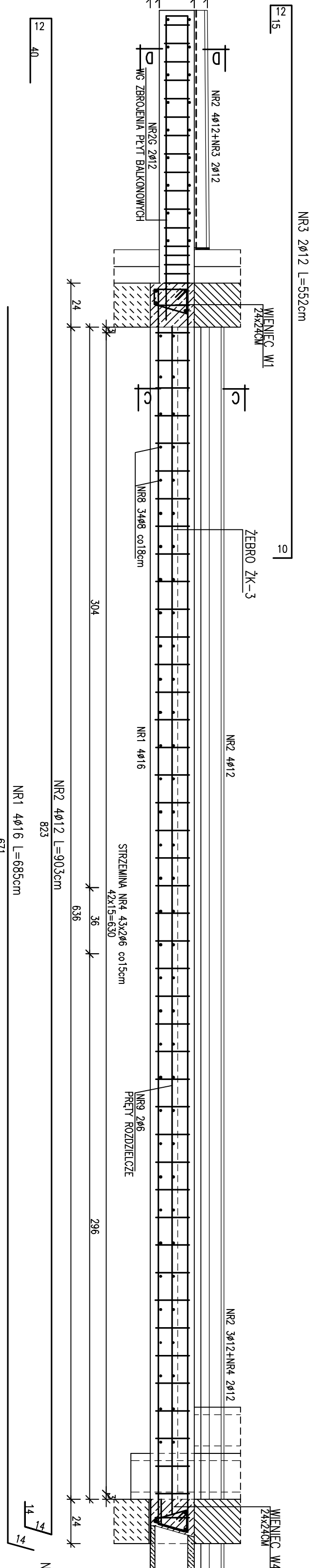
R-1.04. RUSZT KOMINOWY ŻEBRO
SKALA 1:20



PRZEKRÓJ C-C
SKALA 1:20

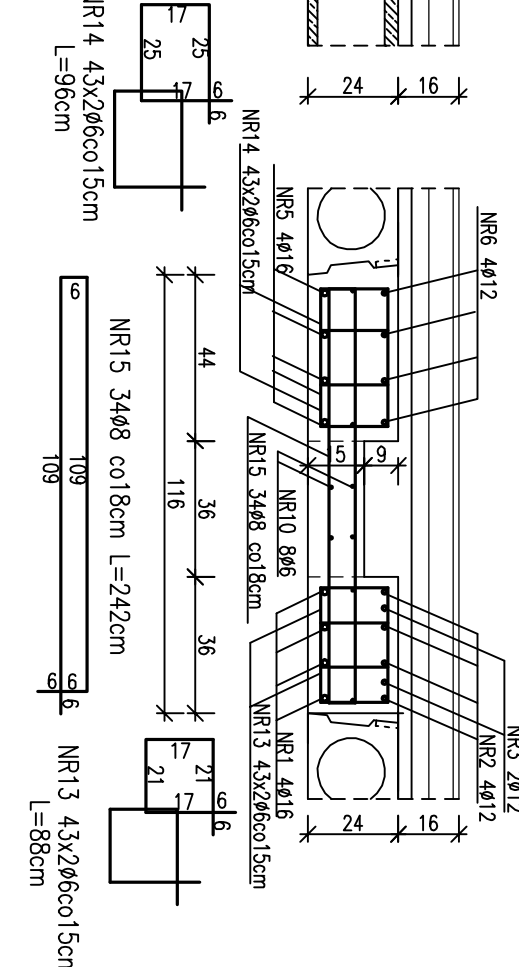


R- 1.03.÷R-5.03. RUSZT KOMINOWY ŻEBRO Żk-1
SKALA 1:20

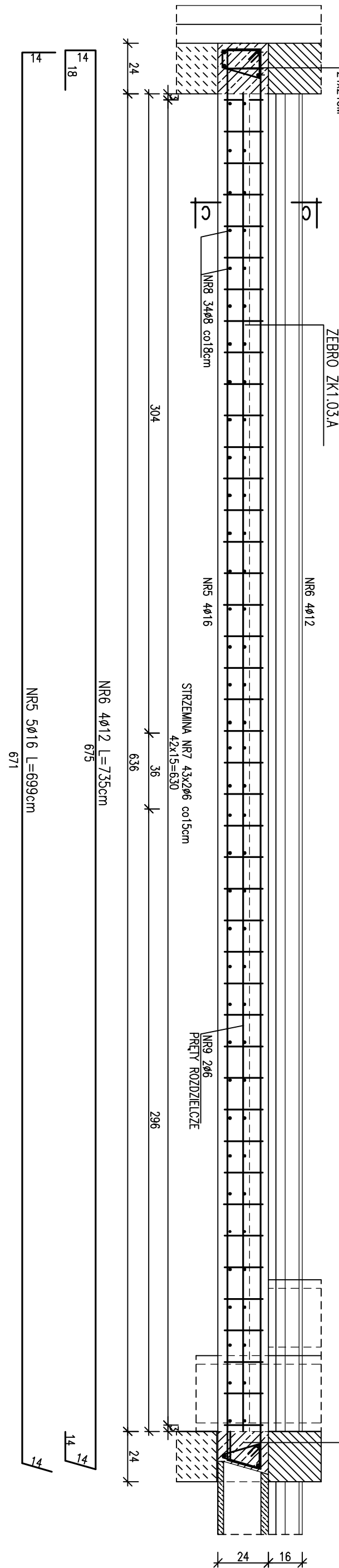


POZ. R-1.03.-4.03. PRZEKRÓJ C-C

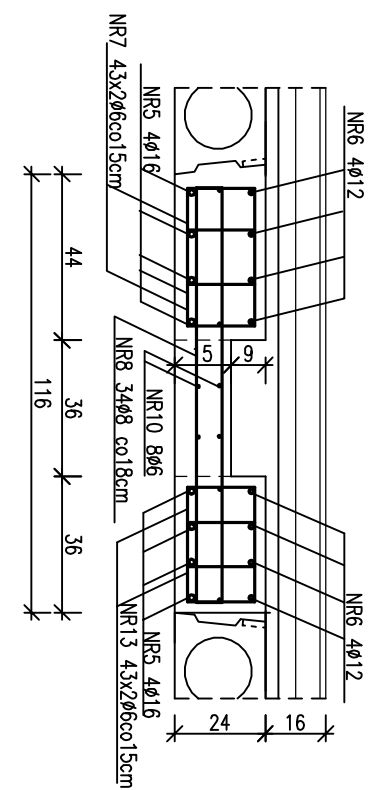
SKALA 1:20



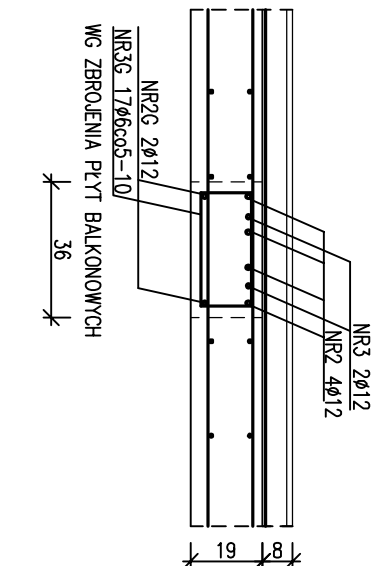
R-1.03. RUSZT KOMINOWY ŻEBRO ŻK1.03.B
SKALA 1:20
WIENIEC W1
73x240



POZ. R-5.03. PRZEKRÓJ C-C



PRZĘKRÓJ D-D
SKALA 1:20



JESSAMINE STYLING PERFORMANCE													
ELEM	H	WR	DANCE STYLE		CR.	ELEM	W.E.L.	DANCE		CR. COUNTRY PERFORM			
			STYL.	STYL.				RESQ	RESQ	RESQ	RESQ	RESQ	RESQ
RUS27 R4.04	1	19	88.6707	669		36.1	4	12	1	-	-	-	-
	2	12	88.6707	575			7	2	-	-	-	-	108.15
	3	12	88.6707	575			66	26.9	-	-	-	-	125.82
	4	6	88.6707	75			12	1	-	-	-	-	88.20
	5	12	88.6707	575			12	1	-	-	-	-	30.84
	6	12	88.6707	575			12	1	-	-	-	-	203.32
	7	12	88.6707	575			30	100	-	-	-	-	-
	8	6	88.6707	206			3	24	15.54	-	-	-	-
	9	12	88.6707	575			2	2	-	-	-	-	37.40
	10	6	88.6707	575			2	2	-	-	-	-	-
RUS27 R4.04	1	12	88.6707	575			2	2	-	-	-	-	11.14
	2	12	88.6707	575			2	2	-	-	-	-	32.25
	3	12	88.6707	575			2	2	-	-	-	-	47.84
	4	12	88.6707	575			2	2	-	-	-	-	-
	5	12	88.6707	575			2	2	-	-	-	-	-
	6	12	88.6707	575			2	2	-	-	-	-	-
	7	12	88.6707	575			2	2	-	-	-	-	-
	8	12	88.6707	575			2	2	-	-	-	-	-
	9	12	88.6707	575			2	2	-	-	-	-	-
	10	12	88.6707	575			2	2	-	-	-	-	-
RUS27 R4.04	1	12	88.6707	575			2	2	-	-	-	-	-
	2	12	88.6707	575			2	2	-	-	-	-	-
	3	12	88.6707	575			2	2	-	-	-	-	-
	4	12	88.6707	575			2	2	-	-	-	-	-
	5	12	88.6707	575			2	2	-	-	-	-	-
	6	12	88.6707	575			2	2	-	-	-	-	-
	7	12	88.6707	575			2	2	-	-	-	-	-
	8	12	88.6707	575			2	2	-	-	-	-	-
	9	12	88.6707	575			2	2	-	-	-	-	-
	10	12	88.6707	575			2	2	-	-	-	-	-
RUS27 R4.04	1	12	88.6707	575			2	2	-	-	-	-	-
	2	12	88.6707	575			2	2	-	-	-	-	-
	3	12	88.6707	575			2	2	-	-	-	-	-
	4	12	88.6707	575			2	2	-	-	-	-	-
	5	12	88.6707	575			2	2	-	-	-	-	-
	6	12	88.6707	575			2	2	-	-	-	-	-
	7	12	88.6707	575			2	2	-	-	-	-	-
	8	12	88.6707	575			2	2	-	-	-	-	-
	9	12	88.6707	575			2	2	-	-	-	-	-
	10	12	88.6707	575			2	2	-	-	-	-	-
RUS27 R4.04	1	12	88.6707	575			2	2	-	-	-	-	-
	2	12	88.6707	575			2	2	-	-	-	-	-
	3	12	88.6707	575			2	2	-	-	-	-	-
	4	12	88.6707	575			2	2	-	-	-	-	-
	5	12	88.6707	575			2	2	-	-	-	-	-
	6	12	88.6707	575			2	2	-	-	-	-	-
	7	12	88.6707	575			2	2	-	-	-	-	-
	8	12	88.6707	575			2	2	-	-	-	-	-
	9	12	88.6707	575			2	2	-	-	-	-	-
	10	12	88.6707	575			2	2	-	-	-	-	-
RUS27 R4.04	1	12	88.6707	575			2	2	-	-	-	-	-
	2	12	88.6707	575			2	2	-	-	-	-	-
	3	12	88.6707	575			2	2	-	-	-	-	-
	4	12	88.6707	575			2	2	-	-	-	-	-
	5	12	88.6707	575			2	2	-	-	-	-	-
	6	12	88.6707	575			2	2	-	-	-	-	-
	7	12	88.6707	575			2	2	-	-	-	-	-
	8	12	88.6707	575			2	2	-	-	-	-	-
	9	12	88.6707	575			2	2	-	-	-	-	-
	10	12	88.6707	575			2	2	-	-	-	-	-
RUS27 R4.04	1	12	88.6707	575			2	2	-	-	-	-	-
	2	12	88.6707	575			2	2	-	-	-	-	-
	3	12	88.6707	575			2	2	-	-	-	-	-
	4	12	88.6707	575			2	2	-	-	-	-	-
	5	12	88.6707	575			2	2	-	-	-	-	-
	6	12	88.6707	575			2	2	-	-	-	-	-
	7	12	88.6707	575			2	2	-	-	-	-	-
	8	12	88.6707	575			2	2	-	-	-	-	-
	9	12	88.6707	575			2	2	-	-	-	-	-
	10	12	88.6707	575			2	2	-	-	-	-	-
RUS27 R4.04	1	12	88.6707	575			2	2	-	-	-	-	-
	2	12	88.6707	575			2	2	-	-	-	-	-
	3	12	88.6707	575			2	2	-	-	-	-	-
	4	12	88.6707	575			2	2	-	-	-	-	-
	5	12	88.6707	575			2	2	-	-	-	-	-
	6	12	88.6707	575			2	2	-	-	-	-	-
	7	12	88.6707	575			2	2	-	-	-	-	-
	8	12	88.6707	575			2	2	-	-	-	-	-
	9	12	88.6707	575			2	2	-	-	-	-	-
	10	12	88.6707	575			2	2	-	-	-	-	-
RUS27 R4.04	1	12	88.6707	575			2	2	-	-	-	-	-
	2	12	88.6707	575			2	2	-	-	-	-	-
	3	12	88.6707	575			2	2	-	-	-	-	-
	4	12	88.6707	575			2	2	-	-	-	-	-
	5	12	88.6707	575			2	2	-	-	-	-	-
	6	12	88.6707	575			2	2	-	-	-	-	-
	7	12	88.6707	575			2	2	-	-	-	-	-
	8	12	88.6707	575			2	2	-	-	-	-	-
	9	12	88.6707	575			2	2	-	-	-	-	-
	10	12	88.6707	575			2	2	-	-	-	-	-
RUS27 R4.04	1	12	88.6707	575			2	2	-	-	-	-	-
	2	12	88.6707	575			2	2	-	-	-	-	-
	3	12	88.6707	575			2	2	-	-	-	-	-
	4	12	88.6707	575			2	2	-	-	-	-	-
	5	12	88.6707	575			2	2	-	-	-	-	-
	6	12	88.6707	575			2	2	-	-	-	-	-
	7	12	88.6707	575			2	2	-	-	-	-	-
	8	12	88.6707	575			2	2	-	-	-	-	-
	9	12	88.6707	575			2	2	-	-	-	-	-
	10	12	88.6707	575			2	2	-	-	-	-	-
RUS27 R4.04	1	12	88.6707	575			2	2	-	-	-	-	-
	2	12	88.6707	575			2	2	-	-	-	-	-
	3	12	88.6707	575			2	2	-	-	-	-	-
	4	12	88.6707	575			2	2	-	-	-	-	-
	5	12	88.6707	575			2	2	-	-	-	-	-
	6	12	88.6707	575			2	2	-	-	-	-	-
	7	12	88.6707	575			2	2	-	-	-	-	-
	8	12	88.6707	575			2	2	-	-	-	-	-
	9	12	88.6707	575			2	2	-	-	-	-	-
	10	12	88.6707	575			2	2	-	-	-	-	-
RUS27 R4.04	1	12	88.6707	575			2	2	-	-	-	-	-
	2	12	88.6707	575			2	2	-	-	-	-	-
	3	12	88.6707	575			2	2	-	-	-	-	-
	4	12	88.6707	575			2	2	-	-	-	-	-
	5	12	88.6707	575			2	2	-	-	-	-	-
	6	12	88.6707	575			2	2	-	-	-	-	-
	7	12	88.6707	575			2	2	-	-	-	-	-
	8	12	88.6707	575			2	2	-	-	-	-	-
	9	12	88.6707	575			2	2	-	-	-	-	-
	10	12	88.6707	575			2	2	-	-	-	-	-
RUS27 R4.04	1	12	88.6707	575			2	2	-	-	-	-	-
	2	12	88.6707	575			2	2	-	-	-	-	-
	3	12	88.6707	575			2	2	-	-	-	-	-
	4	12	88.6707	575			2	2	-	-	-	-	-
	5	12	88.6707	575			2	2	-	-	-	-	-
	6	12	88.6707	575			2	2	-	-	-	-	-
	7	12	88.6707	575			2	2	-	-	-	-	-
	8	12	88.6707	575			2	2	-	-	-	-	-
	9	12	88.6707	575			2	2	-	-	-	-	-
	10	12	88.6707	575			2	2	-	-	-	-	-
RUS27 R4.04	1	12	88.6707	575			2	2	-	-	-	-	-
	2	12	88.6707	575			2	2	-	-	-	-	-
	3	12	88.6707	575			2	2	-	-	-	-	-
	4	12	88.6707	575			2	2	-	-	-	-	-
	5	12	88.6707	575			2	2	-	-	-	-	-
	6	12	88.6707	575			2	2	-	-	-	-	-
	7	12	88.6707	575			2	2	-	-	-	-	-
	8	12	88.6707	575			2	2	-	-	-	-	-
	9	12	88.6707	575			2	2	-	-	-	-	-
	10	12	88.6707	575			2	2	-	-	-	-	-
RUS27 R4.04	1	12	88.6707	575			2	2	-	-	-	-	-
	2	12	88.6707	575			2	2	-	-	-	-	-
	3	12	88.6707	575			2	2	-	-	-	-	-
	4	12	88.6707	575			2	2	-	-	-	-	-
	5	12	88.6707	575									

[illegible]